

-5000B

Measurement mode Fully automatic/Automatic/Manual

Support

Corneal thickness measurement Not support

Measurement range-CCT:400-800um  
Measurement increment-CCT:10um  
Light Source:Blue LED

Display 7-inch 1024\*600 color touch screen, support up and down 180°, left and right 60° flip

Fixation light 1 internal fixation light (green LED), 2 external fixation lights

Measurement accuracy 1mmHg (0.133Kpa)

Measurement range 0-60mmHg (0-8Kpa)  
Include automatic switching between 30/60mmHg

Printer Built-in thermal printer, automatic paper cutting

Data output/input Input: USB; Output:LAN/RS232C

Size and weight 500\*300\*500; <25kg

# FULLY AUTOMATIC NON-CONTACT TONOMETER

QUICK SPEED  
3D AUTO-TRACKING  
AUTO MEASUREMENT  
SOFT AIR PUFF, SAFTY,  
PACHYMETER+TONONMETER



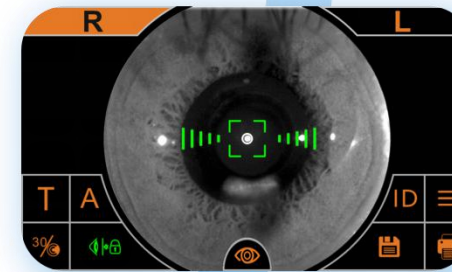
**Non-contact tonometer**



Electric chin rest



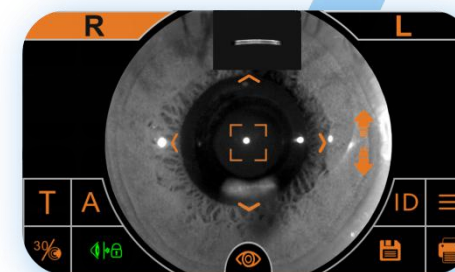
SK-5000B supports corneal thickness measurement  
More functions



Auto alignment  
Auto focus



Fully automatic mode  
One touch  
You can get OS&OD data  
It also supports semi-automatic/manual mode



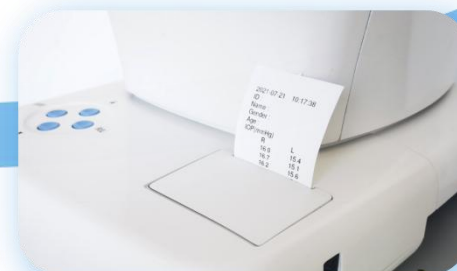
Corneal thickness measurement  
Auto soft air puff



Support air puff detection after turn on  
Support safety limit setting  
Safer equipment use and operation



Auto switch OS&OD



Print report  
Auto paper cutting



7 inch color capacitive touch screen  
Can be flip up and down 180 °  
Flip right and left 60°  
Operation and observation are more convenient



ONE CLICK

FULLY  
AUTOMATIC